

## Pre-Engineering: Guard Rail Photo Deliverable Sample

This section provides guidelines for photographing guard rails during a pre-engineering survey. The naming convention for photos must include the guard rail asset number and viewing direction, as shown in the example below. All photos should be stored in a "PHOTOS" subfolder within the final guard rail survey deliverable folder.

### Example: Photo Directory Structure and Naming Convention

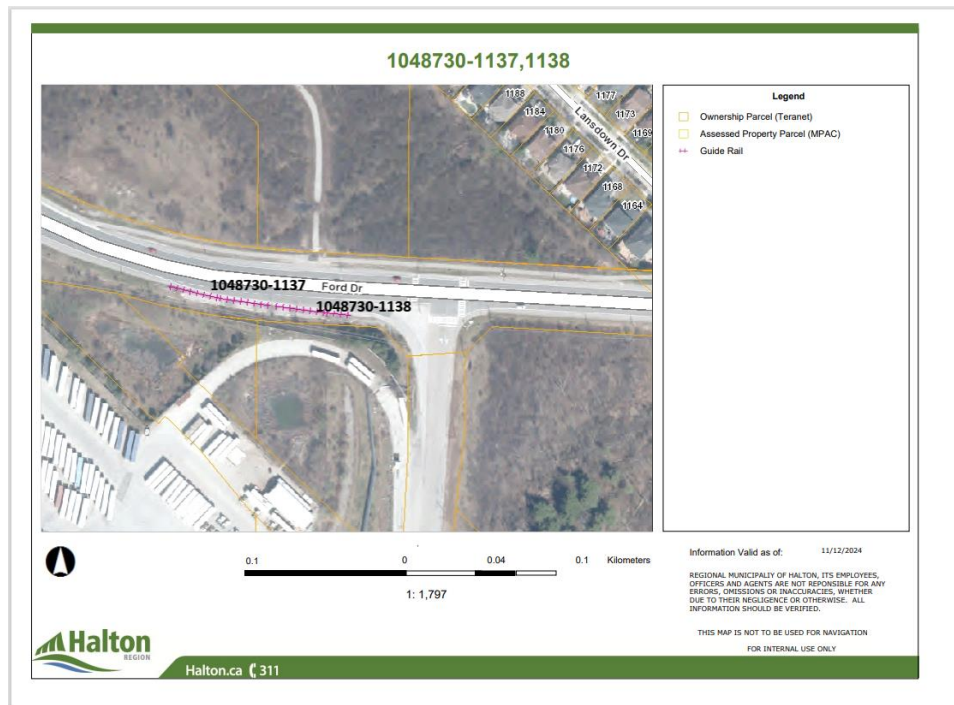
```

  PHOTOS
  ├── 1048730-1137-N
  ├── 1048730-1137-S
  ├── 1048730-1138-N
  └── 1048730-1138-S
  
```

### Guard Rail Asset Number Assignment

The guard rail asset number is obtained from Halton’s GIS. If you do not have access to Halton’s GIS, please contact the project manager to request the asset numbers.

In the example below, there are two guard rails associated with the main asset number **1048730**. To differentiate between them, unique identifiers are appended to the main number, resulting in **1048730-1137** and **1048730-1138**.



**Photographs:** The sample photographs provided may not directly correspond to the order of the directory structure above. They serve only as a reference for the required photography.



